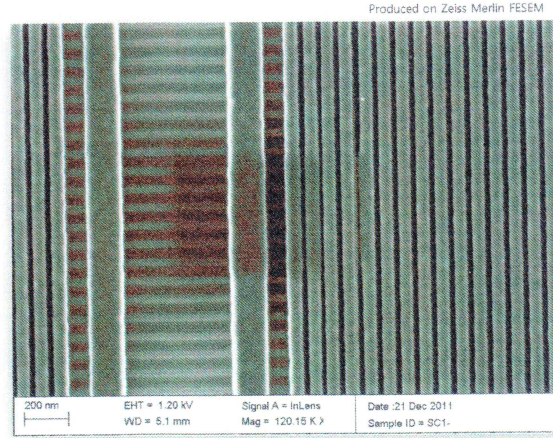
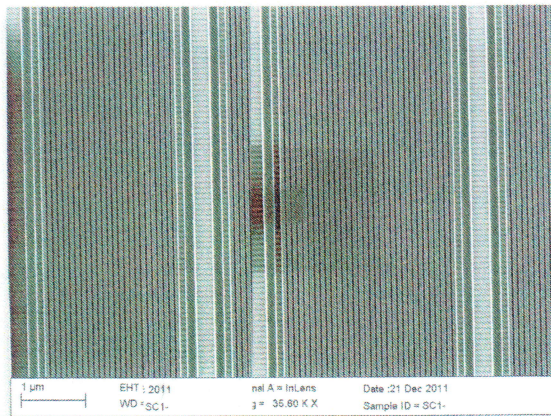
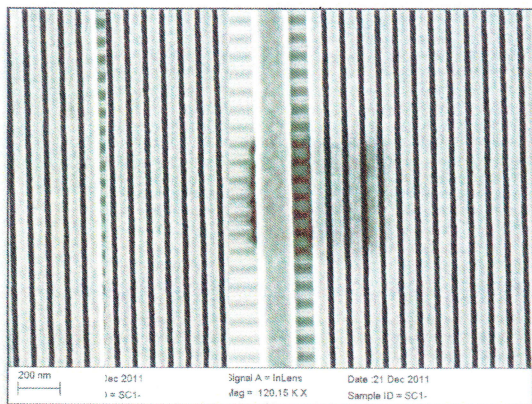


Before Cleaning

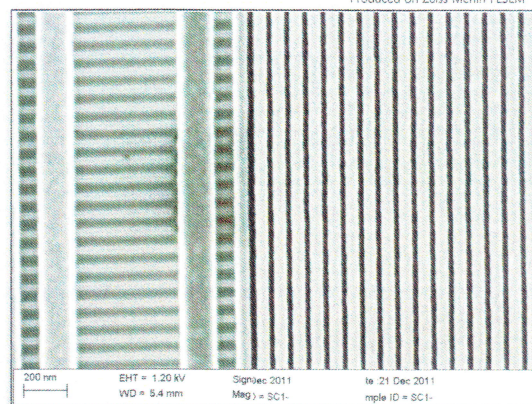


Imaging Conditions: 1.2kV Accelerating Voltage
144pA beam current 10 minutes scan time
6.08-10.6 Torr chamber pressure

After Cleaning

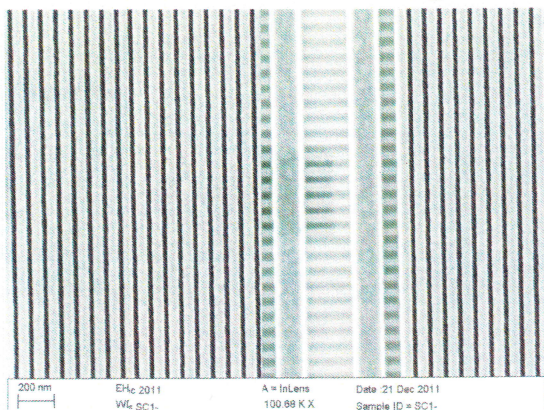


Imaging Conditions: 1.2kV Accelerating Voltage
144pA beam current 6.08-10.6 Torr chamber pressure
Cleaning Conditions: 45 Watts
8 minutes (3 min plus 5 min)
7.53-10.4 Torr chamber pressure

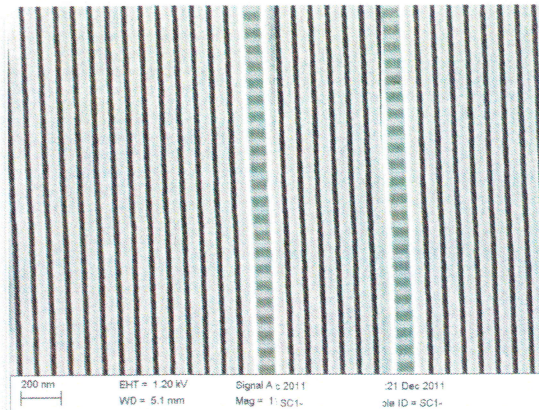


Imaging Conditions: 1.2kV Accelerating Voltage
144pA beam current 6.08-10.6 Torr chamber pressure
Cleaning Conditions: 50 Watts
13 minutes (total clean time)
7.32-10.4 Torr chamber pressure

After Cleaning



Imaging Conditions: 1.2kV Accelerating Voltage
144pA beam current
Note: After an initial clean time of 3 minutes,
only a slight contamination rectangle was visible
after scanning for 10 minutes



Imaging Conditions: 1.2kV Accelerating Voltage
144pA beam current
Note: After a total clean time of 13 minutes,
no contamination was visible after scanning for 10 minutes